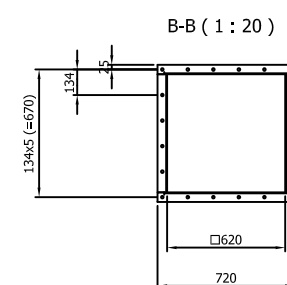
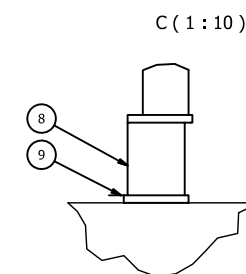
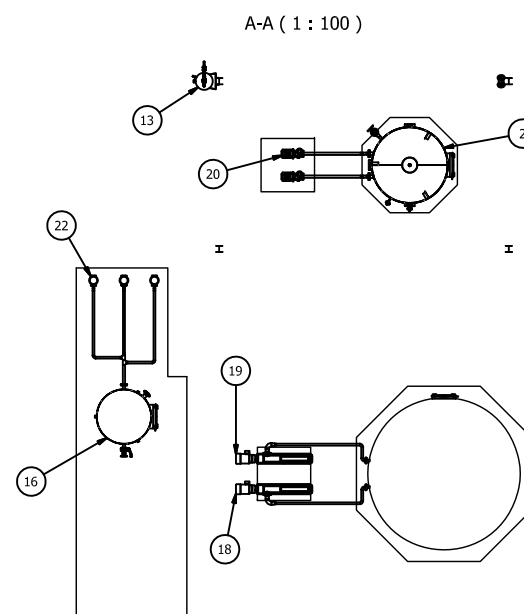
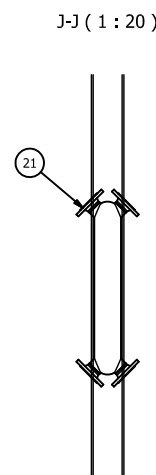


23	00HSJ01BZ001	1	Compensator	1024622	DN100, WB53		---	0
22	00GHC31/32/33AP001	3	Water dilution pump	1022218				33,8
21	00GHC13AC001	1	Heat exchanger	1022064				26
20	00HSJ21/22AP001	2	Urea transfer pump	1022042	Iwakid		---	0
19	00HSK12AP001	1	Urea Injection pump	1021620			---	0
18	00HSK11AP001	1	Urea injection pump	1021616			---	0
17		1	Inspections hatch	1010433			1,4301	21,8
16	00GHC30BB001	2	Water tank	1021146			1,4301	132,3
15		1	Support	1021066				8,8
14		2	Inspections hatch	1010433			1,4301	21,8
13	00QFC51BB001	1	Arch breaking system	1011157				8,2
12	00HSJ10AA201	2	Pressure relief valve	1001325	VCPX 273-1-C		---	9,5
11	00HSJ10BR002	1	Air outlet dustfilter	1001907				10,5
10	00HSJ10AT001	1	Dust filter	1001336	DCE VS28		---	230
9		8	Mounting plate	1020905			---	0
8	00HSJ10CW001	8	Load cell	1020917			---	0
7	00HSJ10AA101	1	Butterfly valve	1003222	VM3001 DN250		---	22,5
6	00HSJ10BZ001	1	Flexible connection	1003672	Ø273		PVC-U	1,1
5	00HSJ10AA501	1	Shut off valve 620	1016119				69,3
4	00HSJ10AF002	1	Screw conveyor	1020783				139,3
3		1	Inspections hatch	1021770			1,4404	21,8
2	00HSJ20BB001	1	Urea mixing tank	1020775			1,4404	394,6
1	00HSJ10AF001	1	Feeder	1020018	624, cc822		---	0
Item	KKS nr.	Qty	Denomination	Part/Draw no	Model or dimension	Length	Material	Mass



Connection flange pos.7

[illegible]